

ENSPIRE

Manufacturer since 1999

ABOUT US

Guangdong Enspire Intelligence Tech. Co., Ltd. is the leading manufacturer of professional and personal beauty tools.

Established in 1999, we boast a 15,000m² factory and have a production capacity of over 50,000 units per month, specialized in high-speed hair dryers, straighteners, curlers, and hot air brushes.

Committed to meeting the diverse demands of our customers, our QC teams and R&D teams adhere to high quality and safety standards. We aligned with certifications including: ISO 9001:2015, CE, ROHS, UL, FCC, ETL, KC etc.

With our superior products' quality, excellent customer service and competitive prices, we strive to build lasting relationships with our customers. We are also ready to commence business with you at any time.



新年快乐
Hello
2024

访客登记处

广东立拓智能科技有限公司

Enspire Co., Ltd.

High Speed Hair Dryer Series



ACCESSORIES

PRODUCT
FEATURES



DIFFUSER

Reduce frizz and build
curis and waves

CONCENTRATOR

Create high-speed airhow
for smooth hair look



H5

High Speed Hair Dryer



- Spec: 100-120V/60Hz/1200W or 220-240V/60Hz/1200W
- Length of power cord: 2m
- Negative ions output: >billion
- High speed motor: 110000 RPM
- Ergonomic design & Light weight
- One-button cold air
- LED indicator
- Low noise level

H8

High Speed Hair Dryer



2 Magnetic Styling Attachments

- Spec: 100-120V/60Hz/1400W or 220-240V/60Hz/1600W
- Length of power cord: 2m
- Negative ions output: >billion
- High speed motor: 110000 RPM
- NTC intelligent temperature control
- One-button cold air
- Intelligent display
- Aviation aluminum shell

H9-A

High Speed Hair Dryer



2 Magnetic Styling Attachments

- Spec: 100-120V/60Hz/1400W or 220-240V/60Hz/1600W
- Length of power cord: 2m
- Negative ions output: >billion
- High speed motor: 110000 RPM
- NTC intelligent temperature control
- One-button cold air
- Intelligent display
- Aviation aluminum shell
- Kids mode

F9

High Speed Hair Dryer



3 Interchangeable Attachments

- Spec: 100-120V/60Hz/1400W or 220-240V/60Hz/1600W
- Length of power cord: 2m swivel
- Negative ions output: > billion
- High speed motor: 110000 RPM
- Ergonomic design & Light weight
- Muti-levels adjusting
- Double air flow
- Low noise level

3030

High Speed Hair Dryer



5 Interchangeable Attachments

- Spec: 100-120V/60HZ/1400W or 220-240V/60Hz/1600W
- Length of power cord: 2m
- Negative ions output: >billion
- High speed motor: 110000 RPM
- Ergonomic design & Light weight
- Muti-levels adjusting
- Double air flow
- Low noise level

LT-M9A

Multifunctional Mini High Speed Hair Dryer



2 Interchangeable Attachments

- Working voltage: 11.1V
- Working power: 15-20W/ 25-35W/ 40-45W
- Charging power: 5V-2A
- Charging time: approx. 2.5 hours
- Working time: 30 mins
- Product size: 129.5*79.5*37mm
- Host weight: 285g
- Accessory: short air nozzle and flat nozzle

LT-M9B

Multifunctional Mini High Speed Hair Dryer



2 Interchangeable Attachments

- Working voltage: 11.1V
- Working power: 15-20W/ 25-35W/ 40-45W
- Charging power: 5V-2A
- Charging time: approx. 2.5 hours
- Working time: 30 mins
- Product size: 129.5*79.5*37mm
- Host weight: 285g
- Accessory: short air nozzle and flat nozzle

Interchangeable Hair Brush Series



ACCESSORIES

PRODUCT FEATURES

60MM OVAL BRUSH

Style , dry & volumiae your hair in one stept ,max drying power with 30% less frizz and less damage



32MM ROUND BRUSH

Round-shaped barrel help to creat soft ,loose curls and strict styles

STRAIGHTENING BRASH

Smooth result with less frizz in half of time - power of a dryer precision of a styler



LEFT AND RIGHT BARRELS (12.5MM)

Creating fluffy and natural curls

F6

Interchangeable Hair Brush



6 Interchangeable Attachments

- Spec: 100-120V/60HZ/1400W or 220-240V/60Hz/1600W
- Length of power cord: 2m
- Negative ions output: >billion
- High speed motor: 110000 RPM
- Ergonomic design & Light weight
- Muti-levels adjusting
- Double air flow
- Low noise level

F8

Interchangeable Hair Brush



5 Interchangeable Attachments

- Spec: 100-120V/60HZ/1400W or 220-240V/60Hz/1600W
- Length of power cord: 2m
- Negative ions output: >billion
- High speed motor: 110000 RPM
- Ergonomic design & Light weight
- Muti-levels adjusting
- Double air flow
- Low noise level

F9

Interchangeable Hair Brush



5 Interchangeable Attachments

- Spec: 100-120V/60HZ/1400W or 220-240V/60Hz/1600W
- Length of power cord: 2m swivel
- Negative ions output: >billion
- High speed motor: 110000 RPM
- Ergonomic design & Light weight
- Muti-levels adjusting
- Double air flow
- Low noise level

F9

Interchangeable Hair Brush



5 Interchangeable Attachments

- Spec: 100-120V/60HZ/1400W or 220-240V/60Hz/1600W
- Length of power cord: 2m swivel
- Negative ions output: >billion
- High speed motor: 110000 RPM
- Ergonomic design & Light weight
- Muti-levels adjusting
- Double air flow
- Low noise level

Curling Iron Series



ACCESSORIES

PRODUCT FEATURES

● ○ ○



Design your look with different curling devices



CL001

Curling Iron



5 in 1 Curling Set

- Spec: 110-120V/ 60Hz
- Length of power cord: 2m
- Smart power off: 1 hour
- PTC thermostatic heating
- Ceramic coated with negative ions
- Temperature range: 140°F - 430°F/ 60°C - 220°C

HL907

Curling Iron



6 in 1 Curling Set

- Spec: 110-120V/ 60Hz
- Length of power cord: 2m
- Smart power off: 1 hour
- PTC thermostatic heating
- Ceramic coated with negative ions
- Temperature range: 140°F - 430°F/ 60°C - 220°C

HL909

Curling Iron



5 in 1 Curling Set

- Spec: 100-240V/ 50-60Hz/ 70W
- MCH heater
- LED indicator
- Temp memory function
- Auto shut off at 60 mins
- Left and right rotation buttons
- Length of power cord: 2m swivel
- Temp range: 140-160-180-200-220°C
- Ceramic coating tube length: 125mm

HL903

Retractable Curler

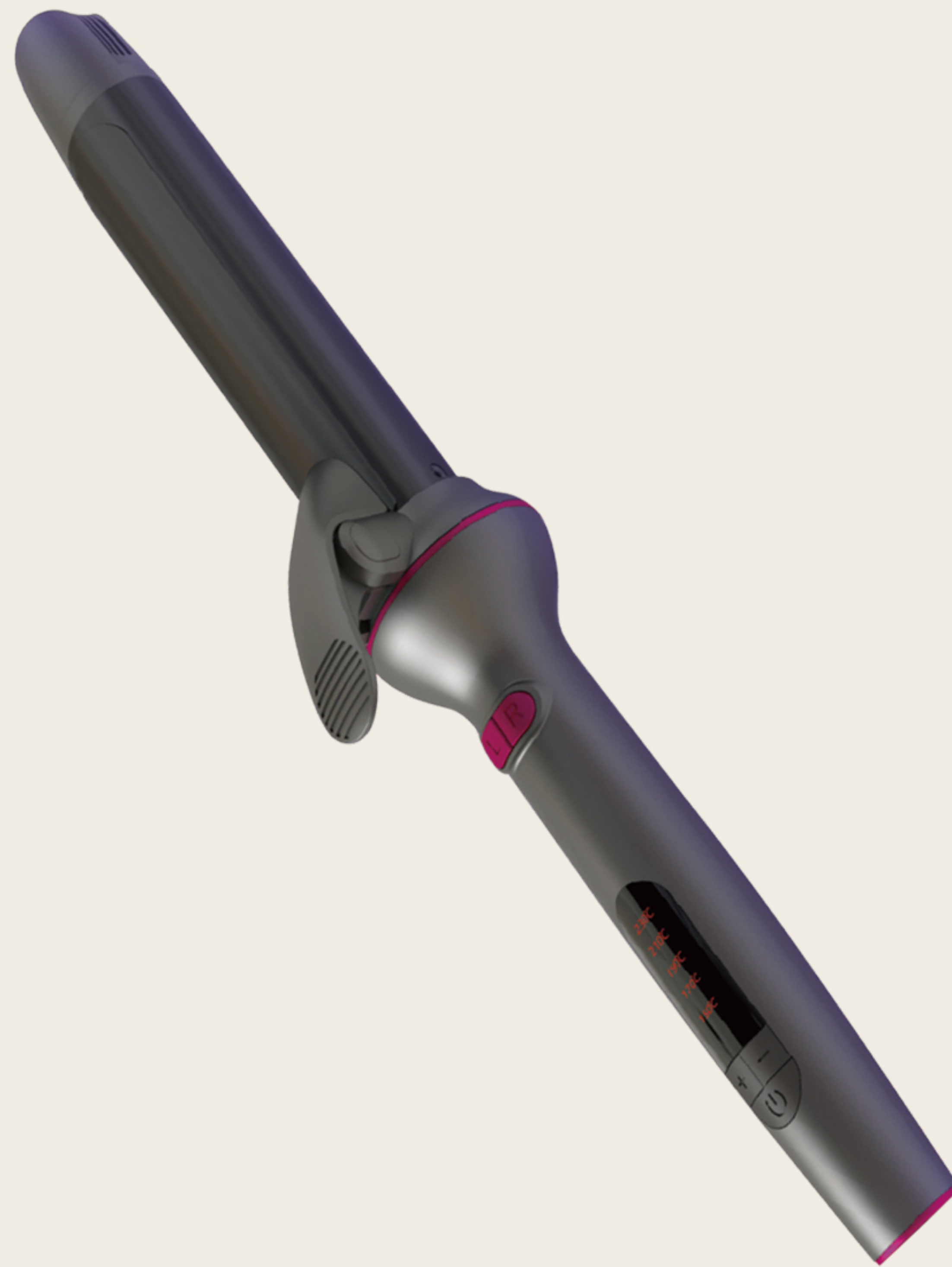
***EXCLUSIVE
PATENT***



- Spec: 100-240V/ 50/60Hz/ 25W
- PTC heater
- LED indication
- Length: 90mm, dia.22mm
- Rotating handle for on/off
- Constant temp at 180°C
- 2 in 1 ceramic coating heating plates
- Removable power cord for portable carry

HL905

Auto Curler



- Spec: 100-240V/ 50/60Hz/40W
- LCD display
- Temp memory function
- Auto shut off at 60 mins
- Length of power cord: 2m
- Left and right rotation buttons
- 14 temp settings: 100-230°C
- Ceramic coating tube:125mm(dia.28/32mm)

HL908B

Auto Curler



- Spec: 100-240V/ 50-60Hz/ 70W
- MCH heater
- LED indicator
- Temp memory function
- Auto shut off at 60 mins
- Length of power cord: 2m swivel
- Left and right rotation buttons
- 5 temp settings: 140-160-180-200-220°C
- Ceramic coating tube length: 125mm(dia.32mm)

HL908

Auto Curler



- Spec: 100-240V/ 50-60Hz/ 70W
- MCH heater
- LED indicator
- Temp memory function
- Auto shut off at 60 mins
- Length of power cord: 2m swivel
- Left and right rotation buttons
- 5 temp settings: 140-160-180-200-220°C
- Ceramic coating tube length: 125mm(dia.32mm)

HL755A

Curling Iron



- Spec: 100-240V/ 50/60Hz/ 50W
- MCH heater
- LED indicator
- Temp memory function
- Auto shut off at 60 mins
- Length of power cord: 2m
- 5 temp settings: 120-160-180-200-230°C
- Optional tube length: 25mm/30mm/35mm/40mm

HL901A

Curling Iron



- Spec: 100-240V/ 50/60Hz/ 25-35W
- PTC heater
- LCD display
- Temp memory function
- Auto shut off at 60 mins
- 12 temp settings: 120-230°C
- Ceramic coating tube length: 132 mm(dia.9.5/13/16mm)
- Rotatable anti-scald cool tip on the front
- 360 degree swivel power cord

HL662

Curling Iron



- Spec: 100-240V/ 50/60Hz / 20-60W
- PTC heater
- LED indicator
- Auto shut off at 60 mins
- 360 degree swivel power cord
- 6 temp settings: 80-110-140-170-200-230°C
- Ceramic coating aluminum heating tube type:
A.132mm(dia.9.5/13/16/19/25/32mm)
B.216mm(dia.19/25/32mm)

Straightener Comb Seires



HL910B

Hair Straightener Brush



- Spec: 100-240V/50HZ
- LED indicator
- Auto shut off at 10 mins
- Negative ions output: >billion
- Temp setting: 120-160-180-200°C
- Short-circuit protection switch
- 360 degree swivel power cord

C6

Portable Rechargeable Straightener



- Spec: 5V/3A/30-60W
- LED indicator
- Li-Battery: 3500mAh
- Charging time: PD 30 mins or regular 120 mins
- Working time: 30-60 mins
- MCH heating with ionic function
- Temp memory function
- Auto shut off at 10 mins
- 1.5M USB cable (type-C)

HL706

Cordless Ionic Paddle Brush



- Spec: 3.7V
- Li-Battery: 320mAh
- Charging time: 60 mins
- Working time: 3 hours
- Ionic function: 20 million
- LED indicator: red and green
- Vibration massage function
- Stainless steel brush teeth
- 1.6M USB cable (type-C)

HL705F

Hair Straightener Brush



- Spec: 100-240V/ 50/60Hz/ 45W
- LCD display
- Auto shut off: 30 mins or 60 mins
- PTC ceramic heater with ionic function
- Infrared function: promote circulation and hair growth
- Temp settings: 100-230°C
- Fahrenheit(F) and Celsius(C) is changeable
- 360 degree rotating wire with hanging ring

HL705G

Hair Straightener Brush



- Spec: 100-240V/ 50/60Hz/ 45W
- LCD display
- Auto shut off: 30 mins or 60 mins
- PTC ceramic heater with ionic function
- Infrared function: promote circulation and hair growth
- Temp settings: 100-230°C
- Fahrenheit(F) and Celsius(C) is changeable
- 360 degree rotating wire with hanging ring

HL701C

Hair Straightening Comb



- Spec: 100-240V/ 50/60Hz/ 27W
- LED indicator
- Ionic function
- Anti-scald design
- Auto shut off at 60 mins (MCH version)
- MCH temp: 140-180-220°C/ PTC temp : 220°C
- 360 degree swivel power cord

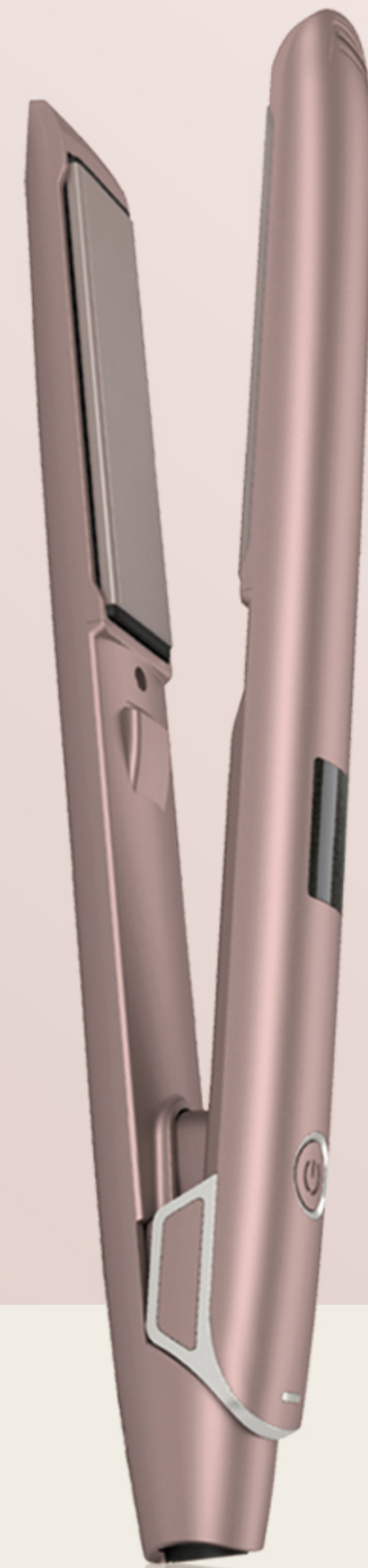
HL662C

Electric Curling Comb



- Spec: 100-240V/ 50/60Hz/ 20W-60W
- PTC heater
- LED indicator
- Auto shut off at 60 mins
- Wet and dry dual used
- 6 temp settings: 80-110-140-170-200-230°C
- Ceramic coating aluminum heating tube type:
 - A. 132mm (dia.9.5/13/16/19/25/32mm)
 - B. 216mm (dia.19/25/32mm)
- 360 degree swivel power cord

Iron Flat Straightener Series



HL615

Smart touch Hair Straightener



- Spec: 100-240V/ 50/60Hz/ 35W
- Instant heat and dual voltage
- Touch screen and LCD display
- Titanium flat iron with 1 inch ceramic
- Straightener and curler adjustable
- Non-stop working mode

HL655

Mini Hair Straightener



- Spec: 100-240V/ 50/60Hz/ 25W
- PTC heater
- LED indicator
- Auto shut off at 60 mins
- Constant temp at 180~200°C
- Optional heating plates: flat or wave
- Ceramic coating heating plates: 17.5x80mm
- 360 degree swivel power cord with hanging loop
- Pocket-size: 182x25x30mm

HL646

Professional Slim Hair Straightener



- Spec: 100-240V/ 50/60Hz/ 30W
- MCH heater
- Auto shut off at 60 mins
- LED temp light indicator
- Swivel on/off switch with temp settings: 80-230°C
- Ceramic coating curve heating plates: 19x85mm
- 360 degree swivel power cord with hanging loop
- Slim size: 270x25x40mm

HL656

Professional Slim Hair Straightener



- Spec: 100-240V/ 50/60Hz/ 35W
- MCH heater
- Auto shut off at 60 mins
- LED temp light indicator
- Swivel temp switch with settings: 80-210°C
- Ceramic coating aluminum heating plates: 15x112.5mm
- 360 degree swivel power cord with hanging loop

HL660

Professional Wide Hair Straightener



- Spec: 100-240V/ 50/60Hz/ 35W
- MCH heater
- Auto shut off at 60 mins
- LED temp light indicator
- Swivel temp switch with settings: 80-230°C
- Ceramic coating aluminum heating plates: 25x90mm
- 360 degree swivel power cord with hanging loop

HL675

Professional Hair Straightener



- Spec: 100-240V/ 50/60Hz/ 30W
- MCH heater
- Handle lock
- Auto shut off at 60 mins
- Dual LCD display for temperature and logo
- Fahrenheit(F) and Celsius(C) is changeable
- Swivel on/off switch with temp settings: 80-230°C
- Ceramic coating aluminum heating plates: 24x90mm
- 360 degree swivel power cord with hanging loop

HL680

Professional Hair Straightener



- Spec: 100-240V/ 50/60Hz/ 35W
- PTC heater
- Handle lock
- Button sound alert
- Auto shut off at 60 mins
- Temp settings: 100-230°C
- Dual LCD display for temp and logo
- Fahrenheit(F) and Celsius(C) is changeable
- Ceramic coating aluminum heating plates: 30x90mm
- 360 degree swivel power cord with hanging loop

HL691

Professional Hair Straightener



- Spec: 100-240V/ 50/60Hz/ 30W
- PTC heater
- LCD display
- Button sound alert
- Auto shut off at 60 mins
- Temp memory function
- Temp settings: 80-200°C (default temp at 170°C)
- Ceramic coating aluminum heating plates: 20x90mm
- 360 degree swivel power cord with hanging loop

HL801A

Hair Straightener



- Spec: 100-240V/ 50/60Hz/ 44W
- Ionic function: 20 million
- 4 temperatures setting
- Instant heating and dual tension
- High quality 3D floating plates
- 2 in 1 hair straightener and curling tong
- 360 degree swivel power cord

HL802

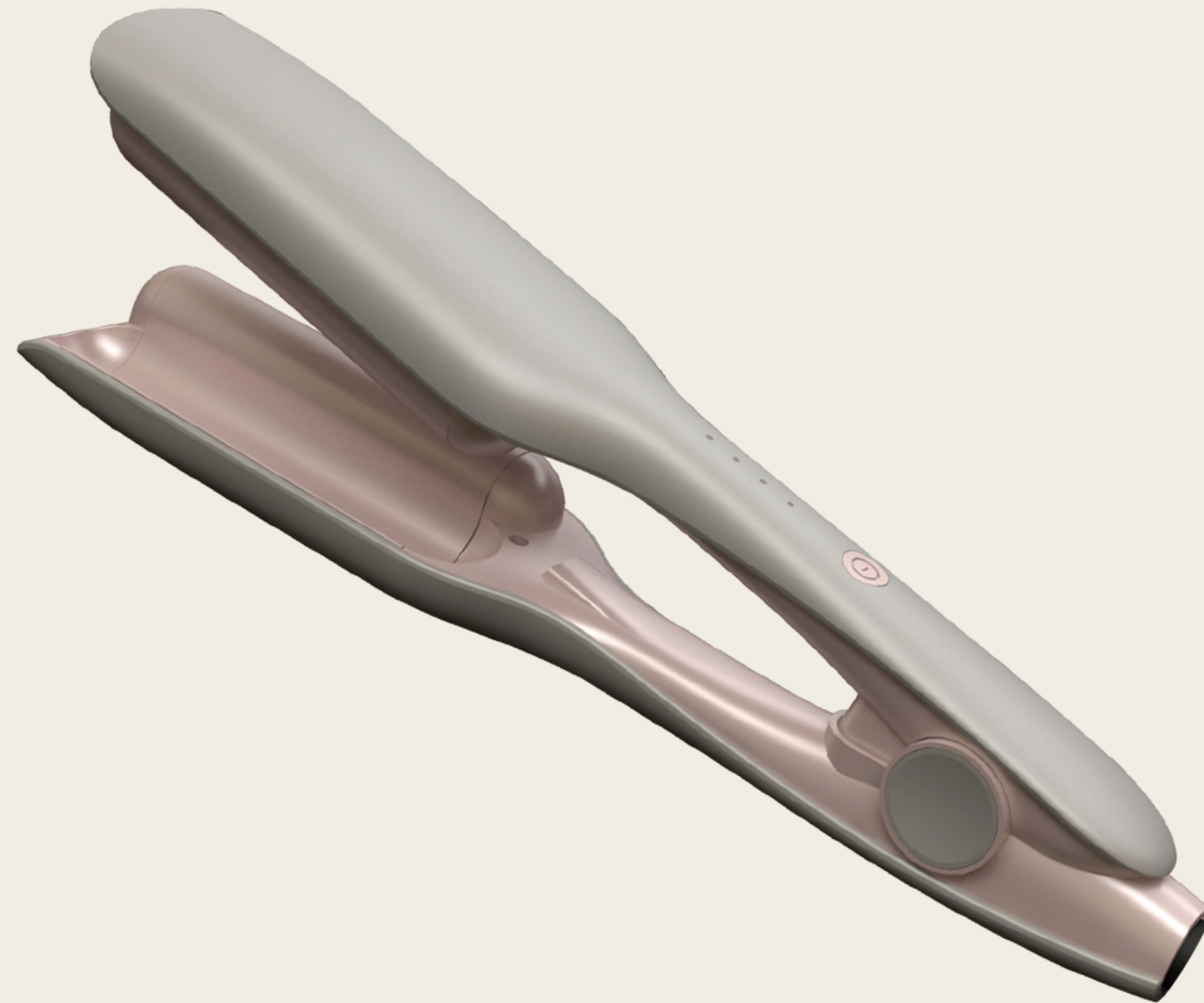
Hair Straightener



- Spec: 100-240V/ 50/60Hz/ 44W
- PTC heater
- LCD display
- Ionic function
- Self-locking function
- Auto shut off at 60 mins
- 12 temp settings: 120-230°C
- Ceramic coating heating plate: 25x90mm
- 360 degree swivel power cord

HL803

Hair Straightener & Curler



- Spec: 100-240V/ 50/60Hz/ 45W
- PTC or MCH heater
- LED indicator
- Ionic function
- Auto shut off at 60 mins
- 4 temp setting: 160-180-200-220°C
- Optional plates: wide flat/ corn/ big wave plate
- 360 degree swivel power cord

HL805

Hair Straightener



- Spec: 100-240V/ 50/60Hz/ 45W
- LCD display
- Handle lock
- Ionic function: 20 million
- Auto shut off at 60 mins
- Temp memory function
- 12 temp settings: 120-230°C
- 360 degree swivel power cord

ACCESSORIES



Crocodile hairpin



Hairpin



Comb



Scarf



Scald resistant gloves

Plug Category



EU Plug Europe/south America/asia Type c



ALCI Plug (For Hair Dryer)USA Type B



US Plug USA/ME /CAN Type A



UK Pigu UK/IRL /MAS/MLT/SIN Type G



AUS Plug CHY/AUS NZL/ARG Type I

CUSTOMIZE COLOUR



Black



Rose Pantone 213 C



White



Grey Gold Pantone 156 C



Silver Pantone 14-4105 TCX



Lotus Root Pink Pantone 7604 C



Blue Pantone 2188 C



Light Pink Pantone 705 U



Guangdong Enspire Intelligence Tech. Co., Ltd.

Email: info@enspirepro.com

Tel: +86 18011968953

Web: www.enspirepro.com

Factory: No.35 Yongfu Street, Miaobian Village, Liaobu Town,
Dongguan city, Guangdong Province, China

Office: Yuncheng East Road 555-557, Jianhua Plaza,
Building A Suit 1905, Baiyun District, Guangzhou city,
Guangdong Province 510000, China